

Seagrass Bioregional Species Key:

3

Mediterranean Bioregion

Species identification key including photo guide, global range maps, drawings, and flowers.

From:

SeagrassNet

Fred Short
University of New Hampshire
603-659-3313 cell
fredtshort@gmail.com
www.SeagrassNet.org

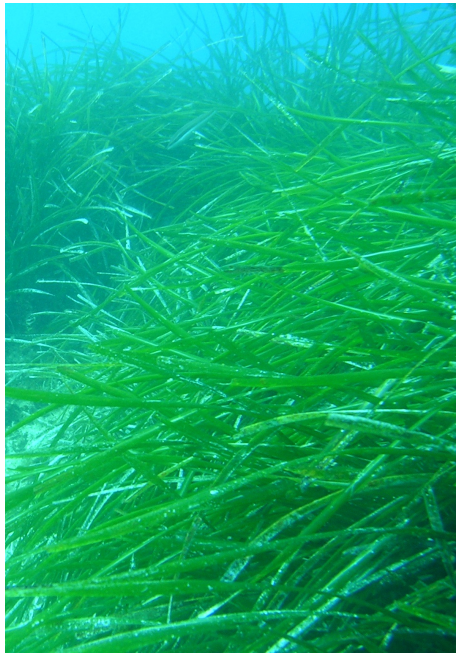
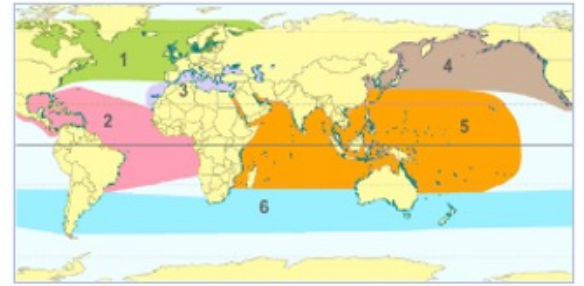
With ratings from:

IUCN Red List of Threatened Species

[Seagrass Red List](#)

*Bioregional Guide to the Seagrass Species of the World. 2025. F.T. Short.
Available on-line www.SeagrassNet.org.*

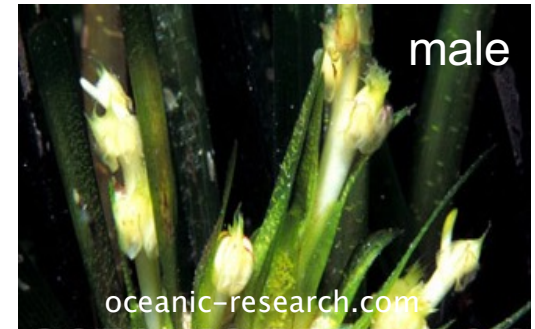
Po *Posidonia oceanica*



Key

- Leaves 40-50 cm
- Leaf tip rounded
- Rhizome robust, brush-like and fibrous
- Flowers emerge on a stem
- Monoecious

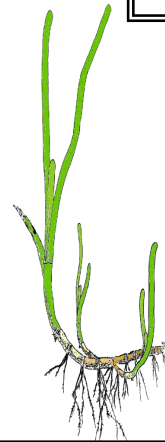
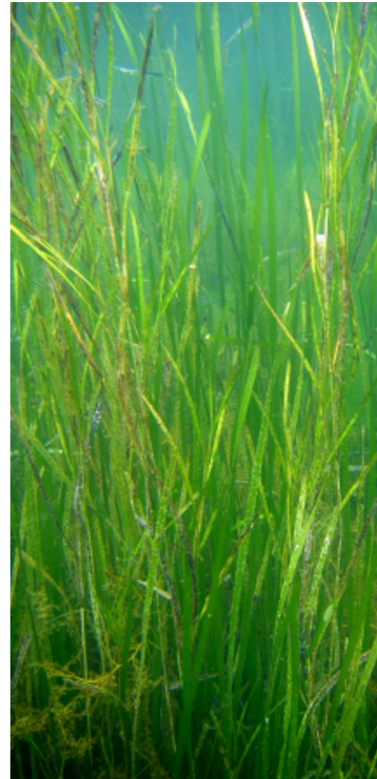
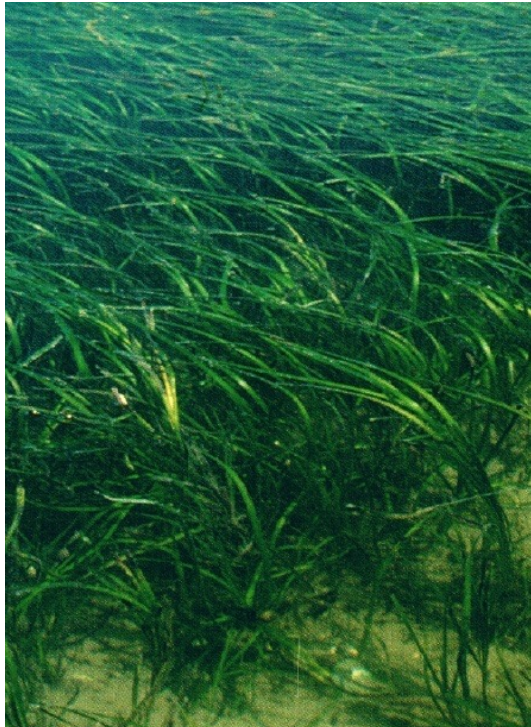
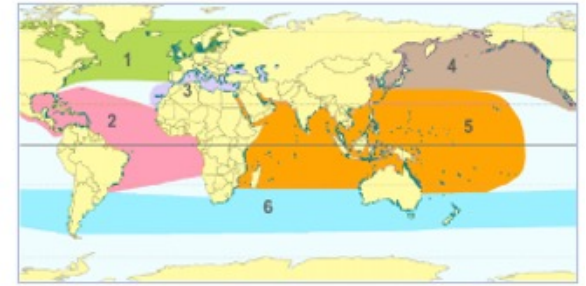
Flowering Parts



Extinction Risk: Least Concern

Zm *Zostera marina*

Bioregion
3

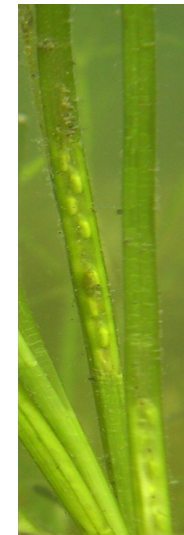


Key

- Flat leaves to 3 m with closed sheath
- Leaf tip smoothly rounded
- Rhizome robust with terminal shoots
- 2 bundles of roots per node
- Monoecious

Flowering Parts

female
& male



Seedling

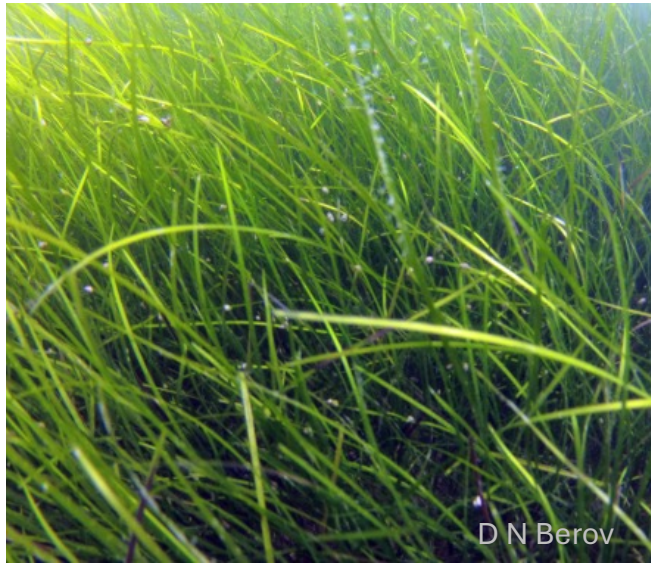
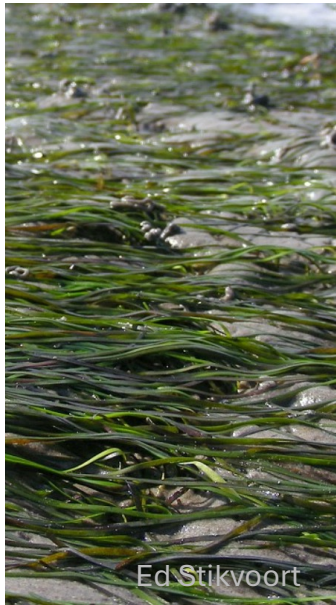


Extinction Risk: Least Concern



Zn *Nanozostera noltii*

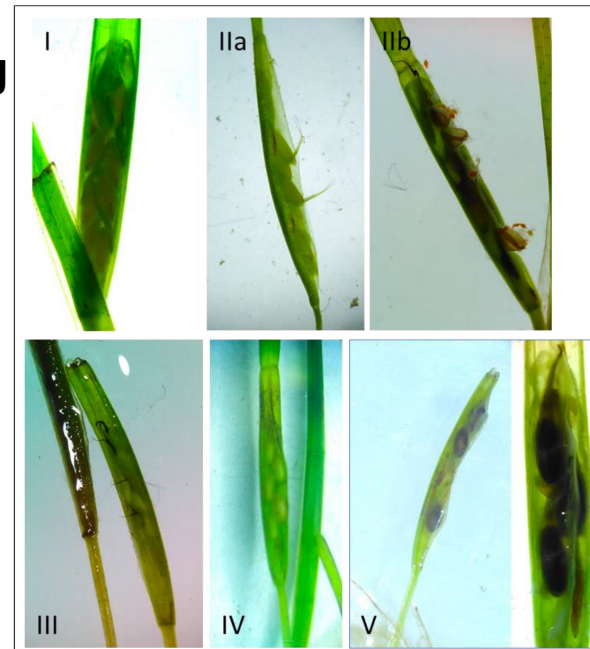
Bioregion
3



Key

- Flat narrow leaves to 30 cm with open sheath
- Leaf tip rounded and unevenly notched
- Thin rhizome, shoots at each node
- Flowers on branched stem
- Monoecious

Flowering Parts



Ankel et al 2021

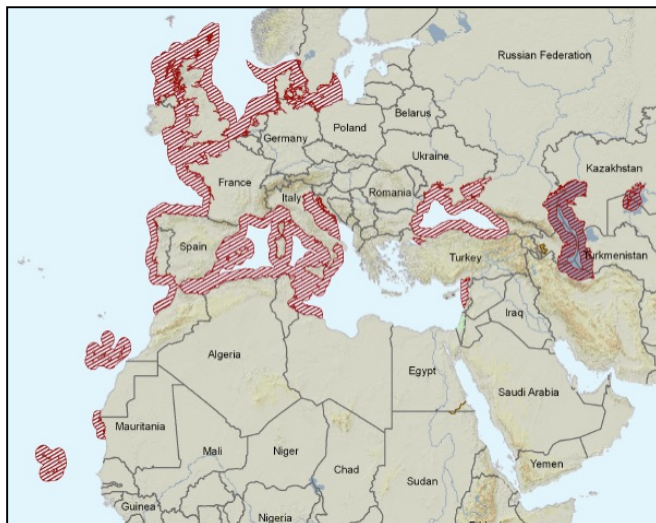
Stage

Description

- | | |
|-----|-----------------------------------------------------------------------------------------------------|
| I | Yellow-green spathe, sheath closed; pistils and stamens are visible, aligned onto the stem |
| II | Pistils (IIa) and/or stamens erected (IIb); styles and stigma and/or anthers are outside the sheath |
| III | Stigma brown, start to depart from spathe; often with stamens already detached from the spathe |
| IV | Green spathe with immature seeds; sheath closed |
| V | Green/brown spathe, dark brown seeds are visible, sheath open |



Extinction Risk: Least Concern



Cn *Cymodocea nodosa*

Bioregion
3



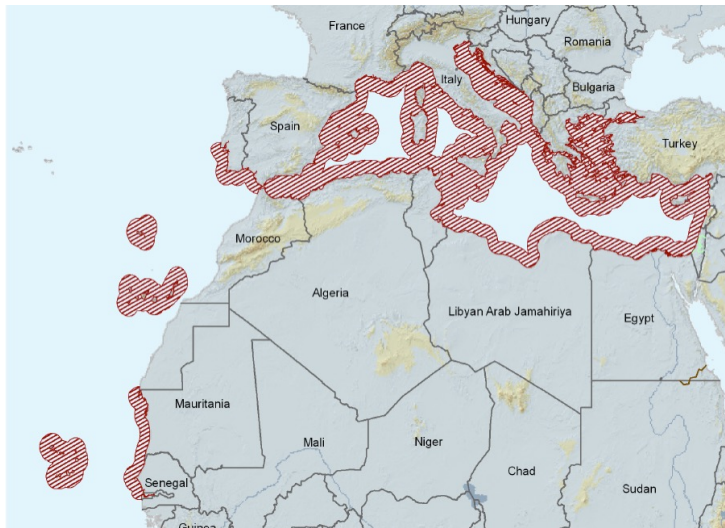
Key

- Flat leaves to 30 cm
- Leaf tip rounded, slightly serrated
- Rhizome robust with one root per node
- Flowers emerge from sheath
- Dioecious

Flowering
Parts

fruit

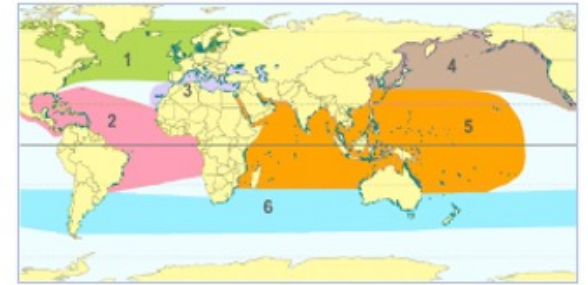
Extinction Risk: Least Concern



male



Hd *Halophila decipiens*

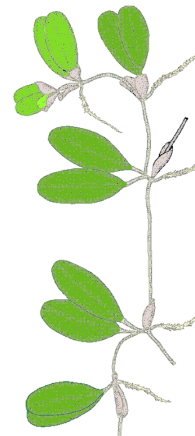
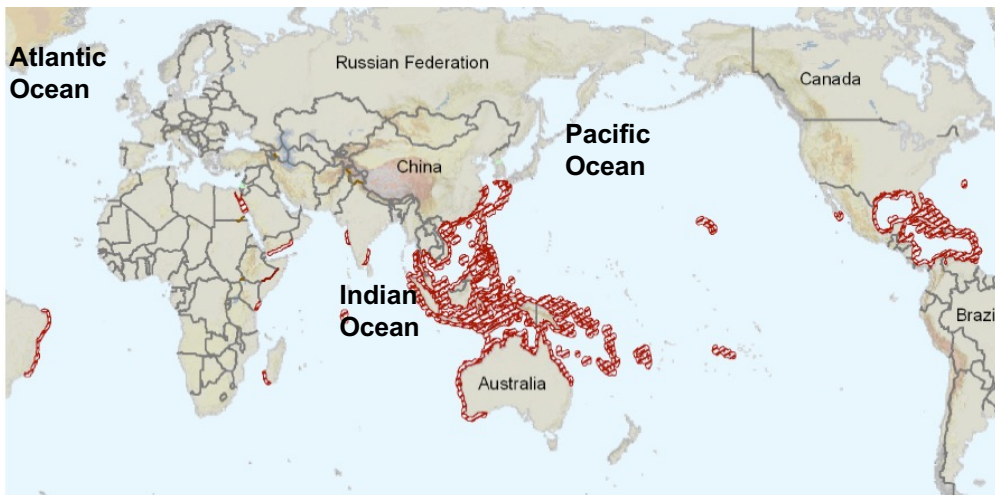


Key

- Paddle-shaped leaves
- Leaf hairs on both sides
- Leaf margins serrated
- Leaves 1-4 cm long
- Monoecious
- Depth 0-30 m

Flowering Parts

Extinction Risk: Least Concern



male & female

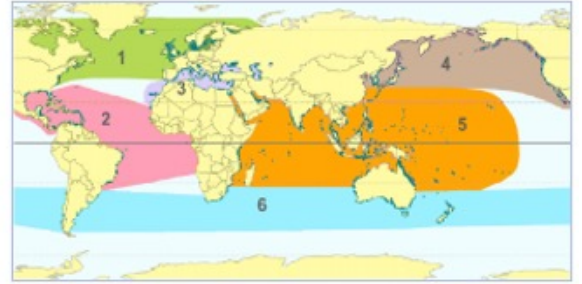


fruit

Hs *Halophila stipulacea*

Invasive species

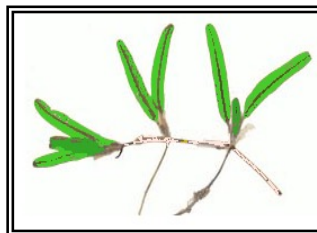
Bioregion
3



Key

- Elongated paddle-shaped leaves to 6cm
- Leaf stippled and bullate, tip serrated
- Distinctive scales cover the stem
- Depth 0 to 60m
- Dioecious
- Range expanding

Extinction Risk: Least Concern



Flowering Parts



male



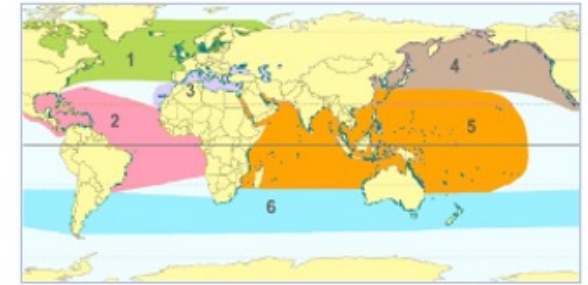
female

Rc *Ruppia cirrhosa*



flora.nhm-wien.ac.at

Extinction Risk: Least Concern



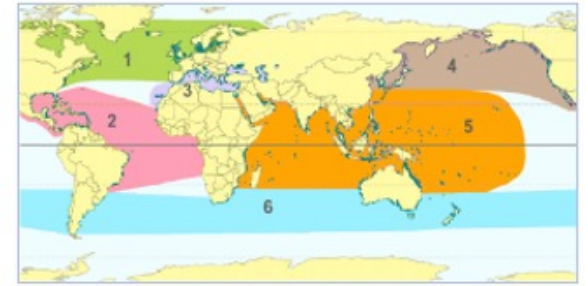
Key

- Leaves flat and thin
- Leaf tapers to tip, 25 cm long
- Fruits cluster on spiral stem
- Depth intertidal to 20 m

Flowering Parts



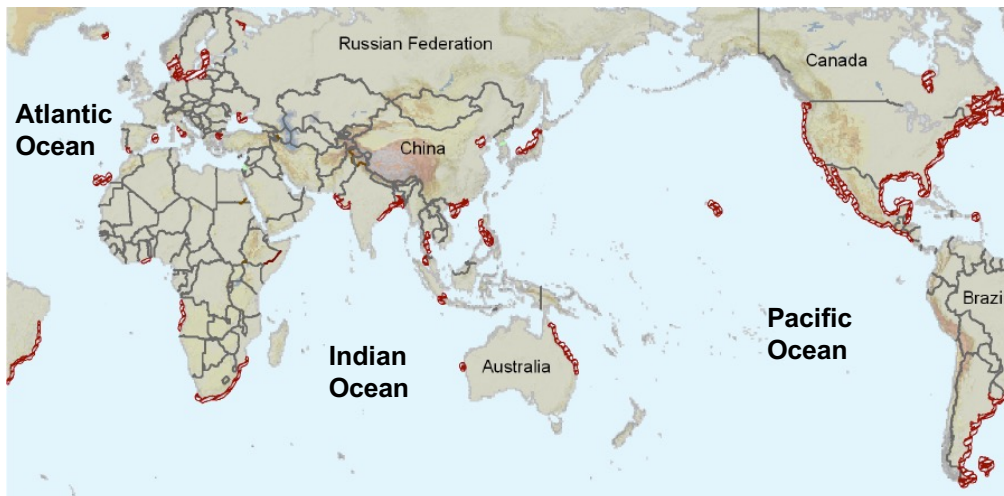
Rm *Ruppia maritima*



Key

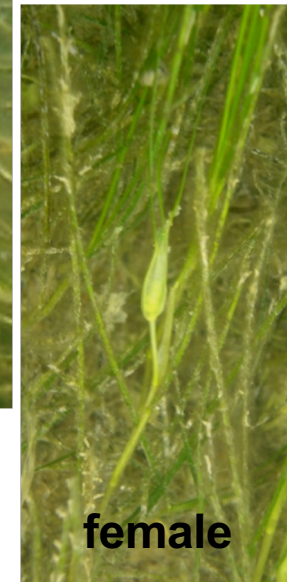
- Leaves flat and thin
- Leaf tapers to tip
- Leaves 4-22 cm long
- Depth -1 to 20 m

Extinction Risk: Least Concern



male

Flowering Parts



female

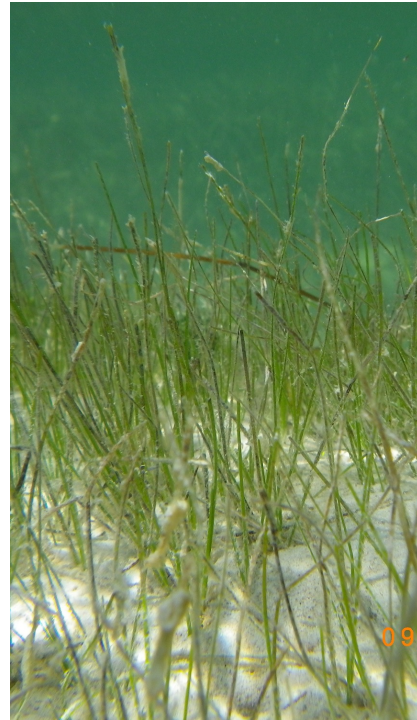
fruit



Hw *Halodule wrightii*



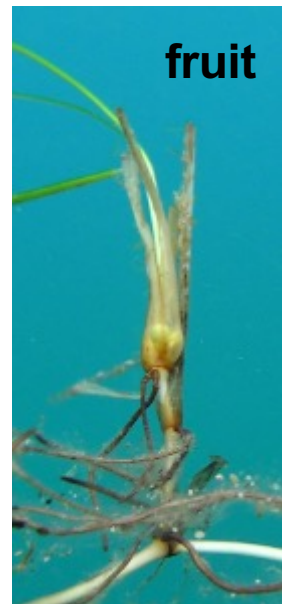
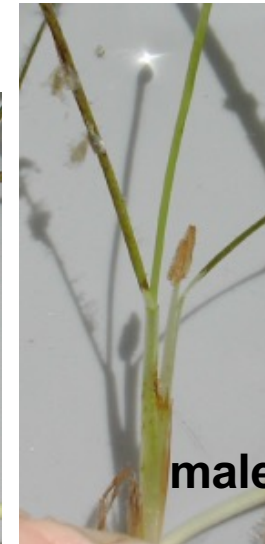
Extinction Risk: Least Concern



Key

- Leaves flat and thin
- Leaf tip with 2-3 points
- Leaves 2-22 cm long
- Rhizome whitish
- Dioecious
- Depth -1 to 20 m
- Sometimes leaves red or black

Flowering Parts



Global Seagrass Species References

den Hartog, C., 1970. **The Sea-Grasses of the World**. North-Holland Publication Co., Amsterdam.

Short, F.T. and R.G. Coles (eds.). 2001. **Global Seagrass Research Methods**. Elsevier Science B.V., Amsterdam. 473 pp.

Green, E.P. and Short, F.T. (eds.). 2003. **World Atlas of Seagrasses**. University of California Press, Berkeley, USA. 324 pp.

Short, F.T., Carruthers, T.J.B., Dennison, W.C., Waycott, M. 2007. **Global seagrass distribution and diversity: a bioregional model**. Journal of Experimental Marine Biology and Ecology 350: 3–20.

Short FT, Polidoro B, Livingstone SR, Carpenter KE, Bandeira S, Bujang JS, Calumpong HP, Carruthers TJB, Coles RG, Dennison WC, Erftemeijer PLA, Fortes MD, Freeman AS, Jagtap TG, Kamal AHM, Kendrick GA, Kenworthy WJ, La Nafie YA, Nasution IM, Orth RJ, Prathep A, Sanciangco JC, van Tussenbroek B, Vergara SG, Waycott M, Zieman, JC. 2011. **Extinction risk assessment of the world's seagrass species**. Biol Conserv. 44: 1961–71.

Bioregion 2 Guide

van Tussenbroek, B. I., M-G. Barba-Santos, J. G., R., Wong, K. Van Dijk, M. Waycott. 2010. **A Guide to the tropical seagrasses of the Western Atlantic**, Universidad Nacional Autónoma de México, October 2010. ISBN: 978-607-02-1222-2

Bioregion 5 Guides

El Shaffai, A. 2016. **Field Guide to Seagrasses of the Red Sea**. Rouphael, A. and Abdulla, A. Second edition. Gland, Switzerland: IUCN and Courbevoie, France: Total Foundation. viii + 56 pp.

Waycott, M., K. McMahon, J. Mellors, A. Calladine and D. Kleine. 2004. **A Guide to Tropical Seagrasses of the Indo-West Pacific**. James Cook University, Townsville. 72 pp.

Bioregion 6 Guide

Waycott, M, K. McMahon, P. Lavery. 2014. **A Guide to Southern Temperate Seagrasses**. CSIRO Publication – April 28, 2014. 109 p.

Bioregional Guide to the Seagrass Species of the World. 2025. F.T. Short.